

Atura Power

North-End Peterborough Storage

Public Community Meeting

An opportunity to learn about the proposed project and share feedback.

Tuesday, October 24, 2023



Agenda

1. Introductions and Land Acknowledgement
2. Proponent and Project Information
3. Timeline & Next Steps
4. Question & Answer Period
5. Closing Comments



Land Acknowledgement

Atura Power respectfully acknowledges that the land on which Peterborough County sits is the ancestral land of many generations of Indigenous nations, who have been here since time immemorial.

We respectfully acknowledge that we are on the treaty and traditional territory of the Mississauga Anishinaabeg. We offer our gratitude to the First Peoples for their care for, and teachings about, our earth and our relations. May we honour those teachings.

Atura Power is committed to fostering positive and mutually beneficial relationships with Indigenous peoples and communities across Ontario, and work in allyship toward respective community goals and objectives, in peace, respect, and friendship.



About Atura Power

Atura Power's Fleet of Generation Assets

A subsidiary of Ontario Power Generation, Atura Power owns and operates Ontario's largest fleet of combined-cycle gas turbine power plants.



1. Brighton Beach Generating Station
Capacity 570 MW



2. Halton Hills Generating Station
Capacity 683 MW



3. Portlands Energy Centre
Capacity 550 MW



4. Napanee Generating Station
Capacity 900 MW



5. Napanee BESS Phase 1
Capacity 250 MW



6. Oakville Head Office



Comments or questions can be sent to: peterboroughenergystorage@aturapower.com

Project Need

- The Independent Electricity System Operator (IESO) is the Crown corporation responsible for operating the province's electricity system
- Ontario is entering a period of emerging electricity system needs; IESO forecasts that an additional 4,000 MW are needed by the end of the decade
- The IESO is implementing procurement processes to secure new electricity resources that could be in service by 2027-2028; Atura Power has qualified in IESO's Long-Term 1 (LT1) procurement process
- The North-End Peterborough Storage system is part of Atura Power's efforts to increase Ontario's electricity supply, support grid reliability, and help us get to net-zero



Project Description & Location

Project Benefits

- Supports year-round electricity generation and storage capacity, preventing blackouts and brownouts in the community and beyond

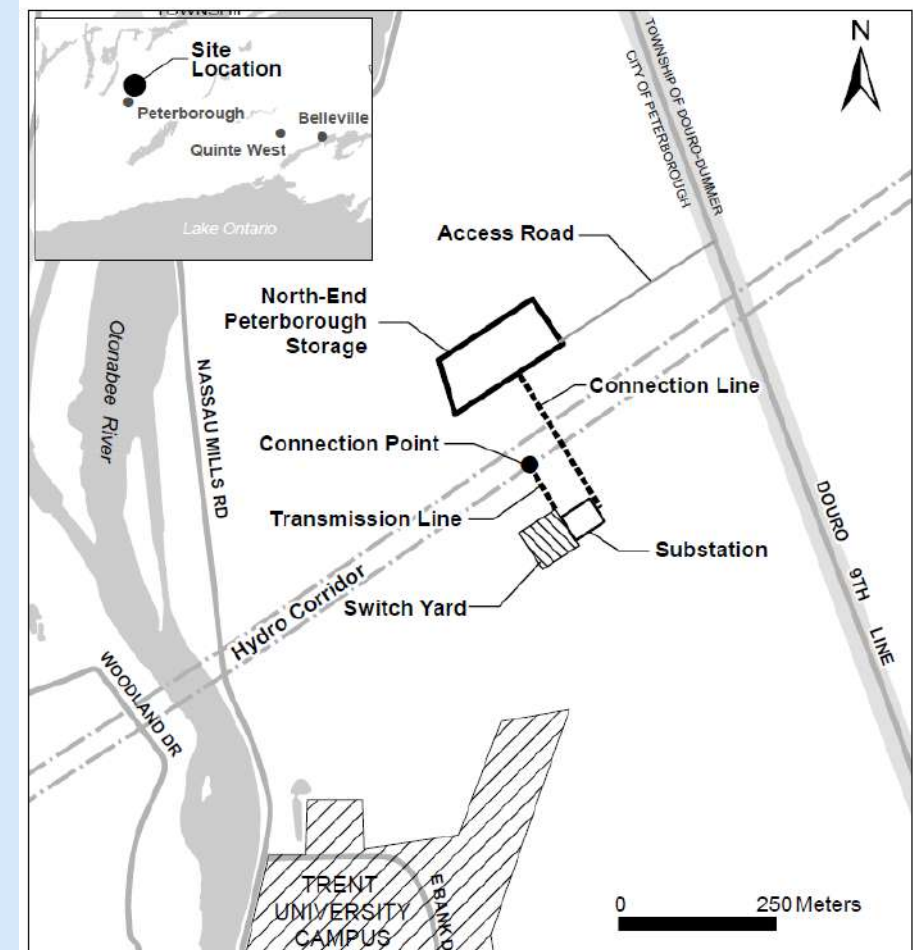
Project Capacity

- Store and output up to **132 MW** of electricity for up to four hours

Project Location

- The project will be located between Douro Ninth Line and Nassau Mills Rd. on land leased from Trent University

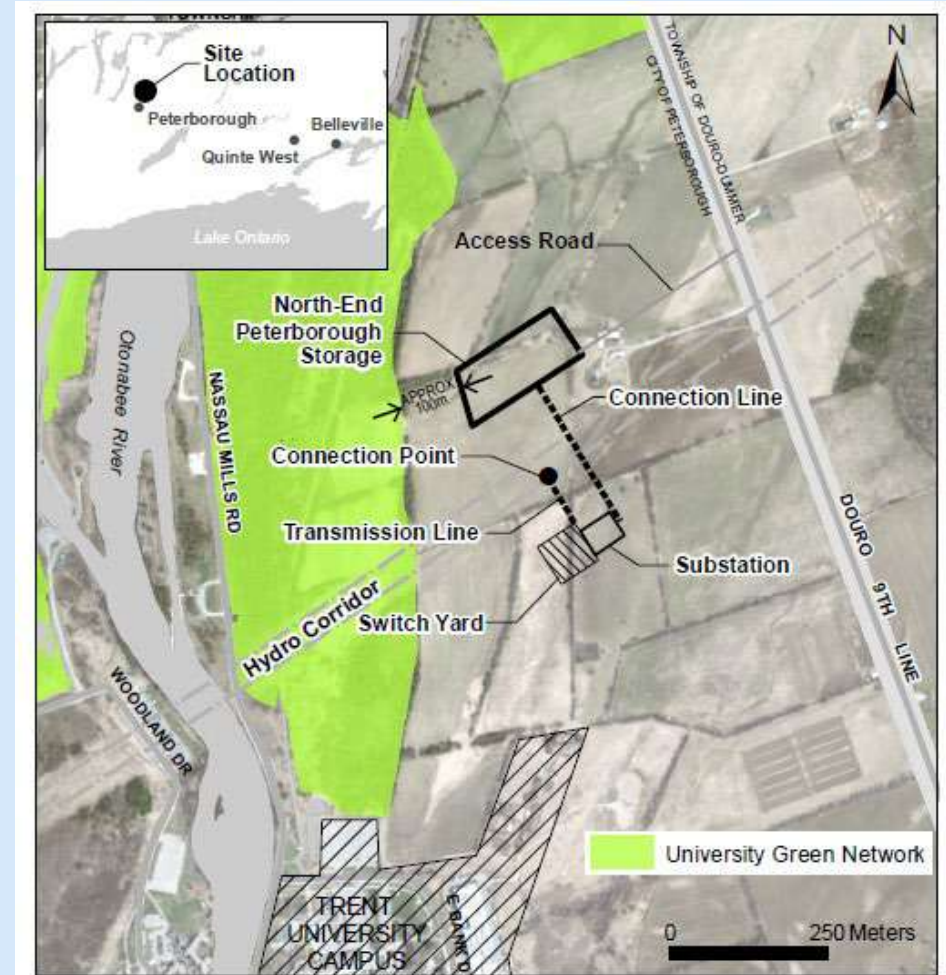
Conceptual Plan of Proposed Project Components



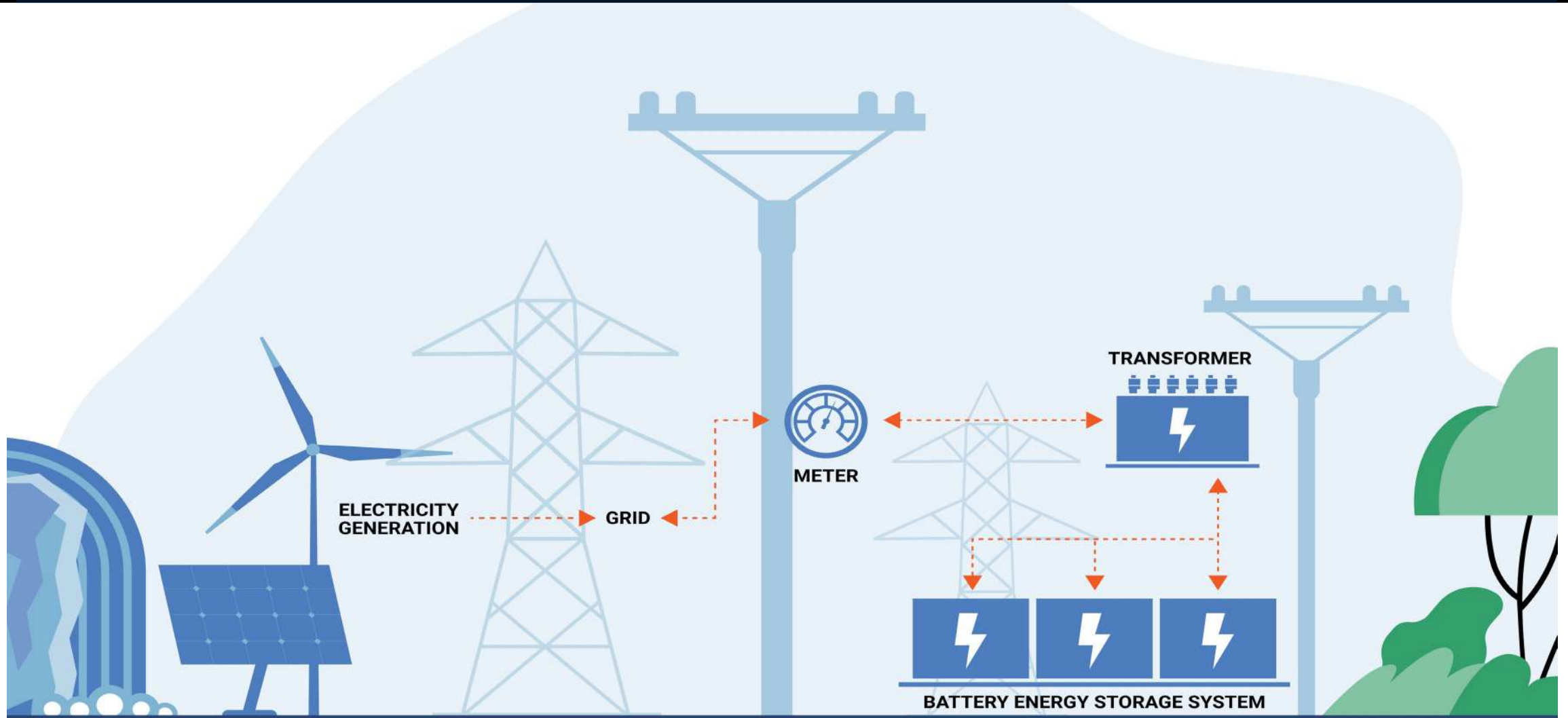
Energy Storage System

- The **Energy Storage system** will include:
 - Lithium-ion battery units
 - A system that will convert electrical alternating current (AC) to direct current (DC) for battery storage
 - Transmission connection facilities
 - Transformers
 - Emergency power and support buildings
 - On-site operation and monitoring
- Battery units will charge during periods of low demand and be available to the grid during period of high demand

Conceptual Plan of Proposed Project Components



How Energy Storage Works



Comments or questions can be sent to: peterboroughenergystorage@aturapower.com



Project Timeline

Activity	Timeline
LT1 Proposal Submission	December 2023
IESO Contract Offer Announcement	May 2024
Target Construction Start	2025
Operations	2027-2047

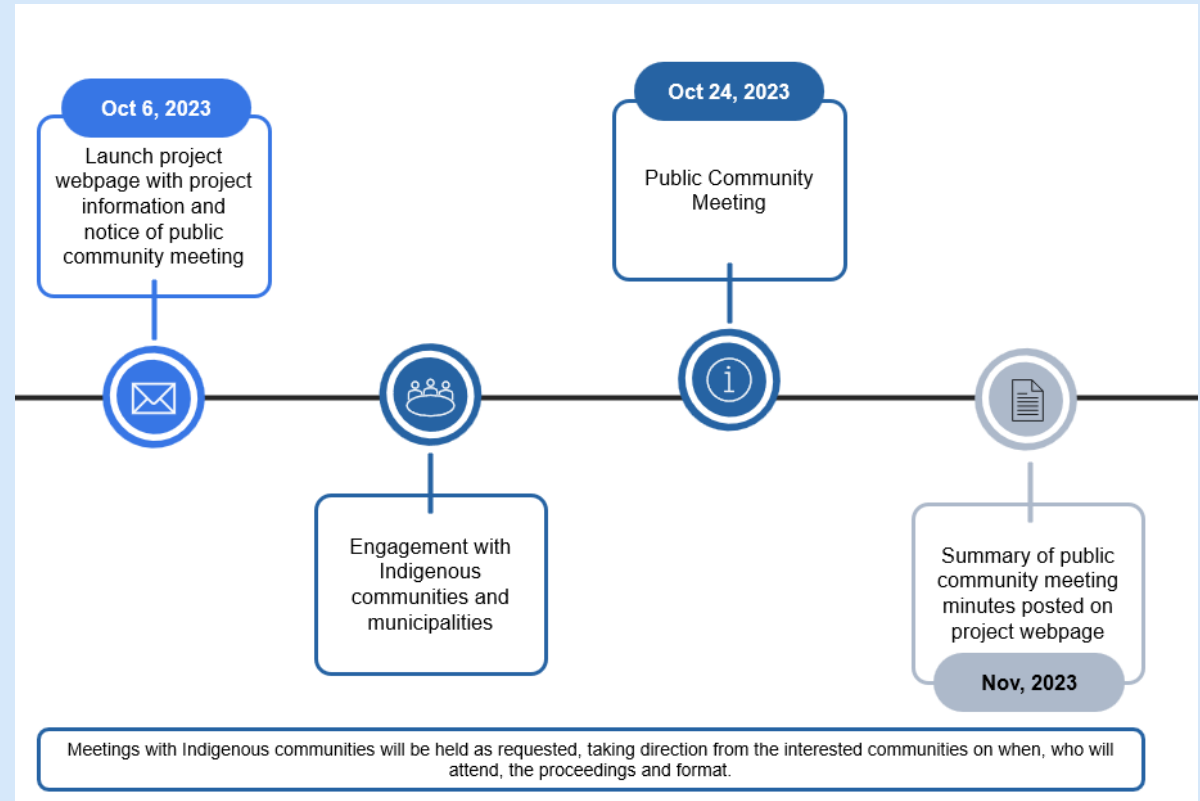
Atura Power will complete a project-specific Environmental Assessment process and obtain the necessary permits and approvals prior to construction.

Indigenous and public engagement will remain a priority and will continue throughout the project planning phase.



Next Steps

- Meeting materials including a summary of questions and responses will be posted to the project webpage
- Atura Power will present project information to the City of Peterborough Council
- The North-End Peterborough Storage LT1 proposal will be submitted to the IESO in December



**We'd now like to
invite any questions
or comments**



Thank You

Please email the project contact or visit the project webpage for more information:



Email: peterboroughenergystorage@aturapower.com



Webpage: aturapower.com/peterboroughenergystorage

